

74508 - MANUAL for spare part kit 999902

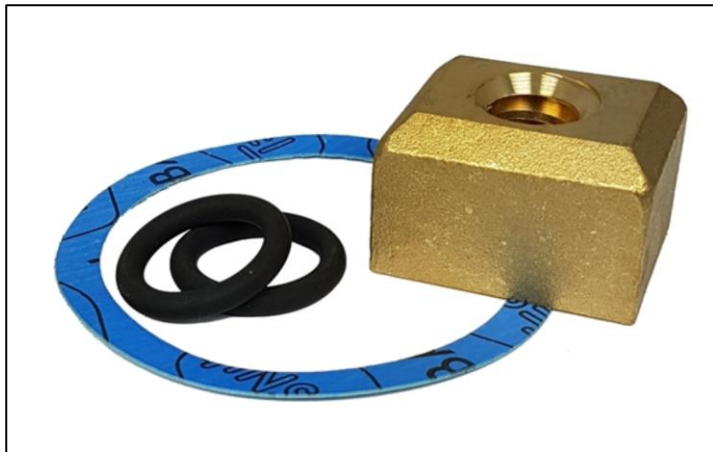
PRODUCT INFORMATION

Product full name: Spare part kit, quick and self-closing valve
Nominal size: DN15-250

DESCRIPTION

Spare part kit for quick closing valves 501002/201102/901002/901062/901102/901162 and self-closing valves 521002/521102/921002/921102.

Spare part kit contains 2 pieces of O-rings, one setting nut and one gasket.



INSTALLATION INSTRUCTIONS

Before any attempts to install the spare parts, make sure that the valve is isolated from any pressurized flow.

1. When flow through or to the valve is removed make sure that the valve is open.
2. Release the nuts clamping the bonnet to the valve body.
3. Remove the bonnet from the valve body and lower the disc and stem with the handwheel so that the spring is unstrained.
4. Disassemble the handwheel from the stem. (see figure 1)
5. Remove the old gasket and replace it with the new one. Make sure to clean the ring before placing the new gasket.
6. Loosen the indication washer on the stem by removing the screw that attach it to the stem.
7. Pull out the stem with disc and spring from the bonnet as you unscrew it from the old setting nut. (see figure 2)
8. Remove the two O-rings inside the bonnet and replace them with the two new ones (see figure 3). On smaller sized valves, use suitable tools to reach the O-rings.
9. Lubricate the new O-rings with grease.
10. Re-assemble the stem with disc and spring into the bonnet using the new setting nut. Don't forget the indication washer.
11. Re-assemble the handwheel onto the stem.
12. Lift the bonnet into place on the valve body. Use the handwheel to lift the disc to a position where it won't be in contact with the valve seat.
13. Re-attach the indication washer to stem with screw.
14. Re-assemble the bolts to attach bonnet to valve body.
15. Reload valve for quick closing.

For more detailed information, please visit the Meson webpage or contact our company.

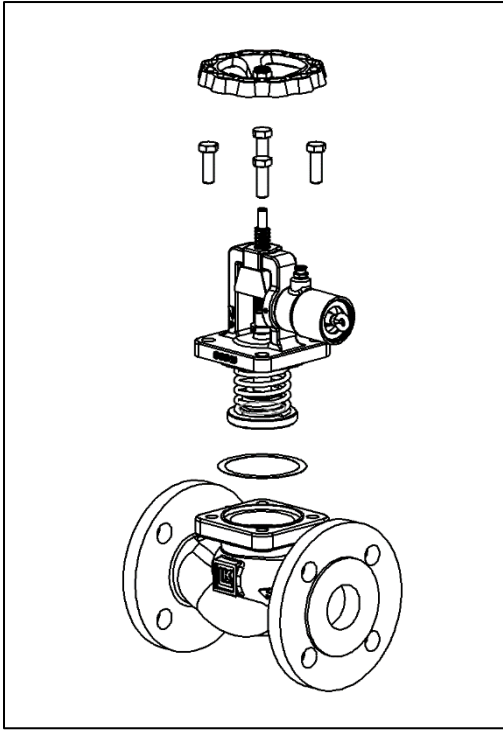


Figure 1 Disassemble bolts and handwheel to separate bonnet and body. Replace the old gasket with the new.

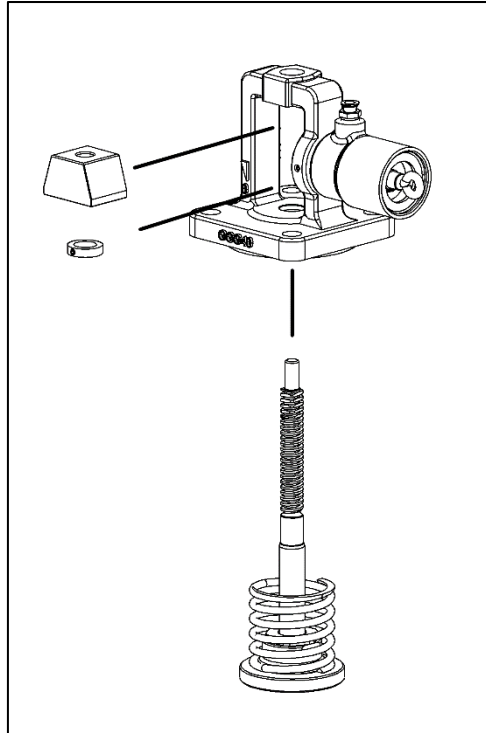


Figure 2 Remove setting nut and indication nut to be able to remove stem from bonnet.

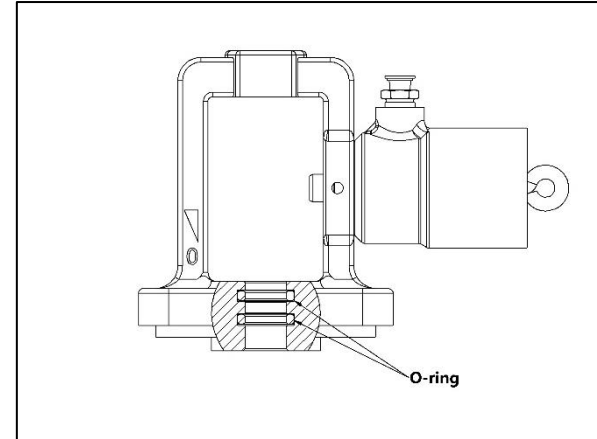


Figure 3 Replace the two O-rings inside the bonnet. Use suitable tool to reach the O-rings if needed.